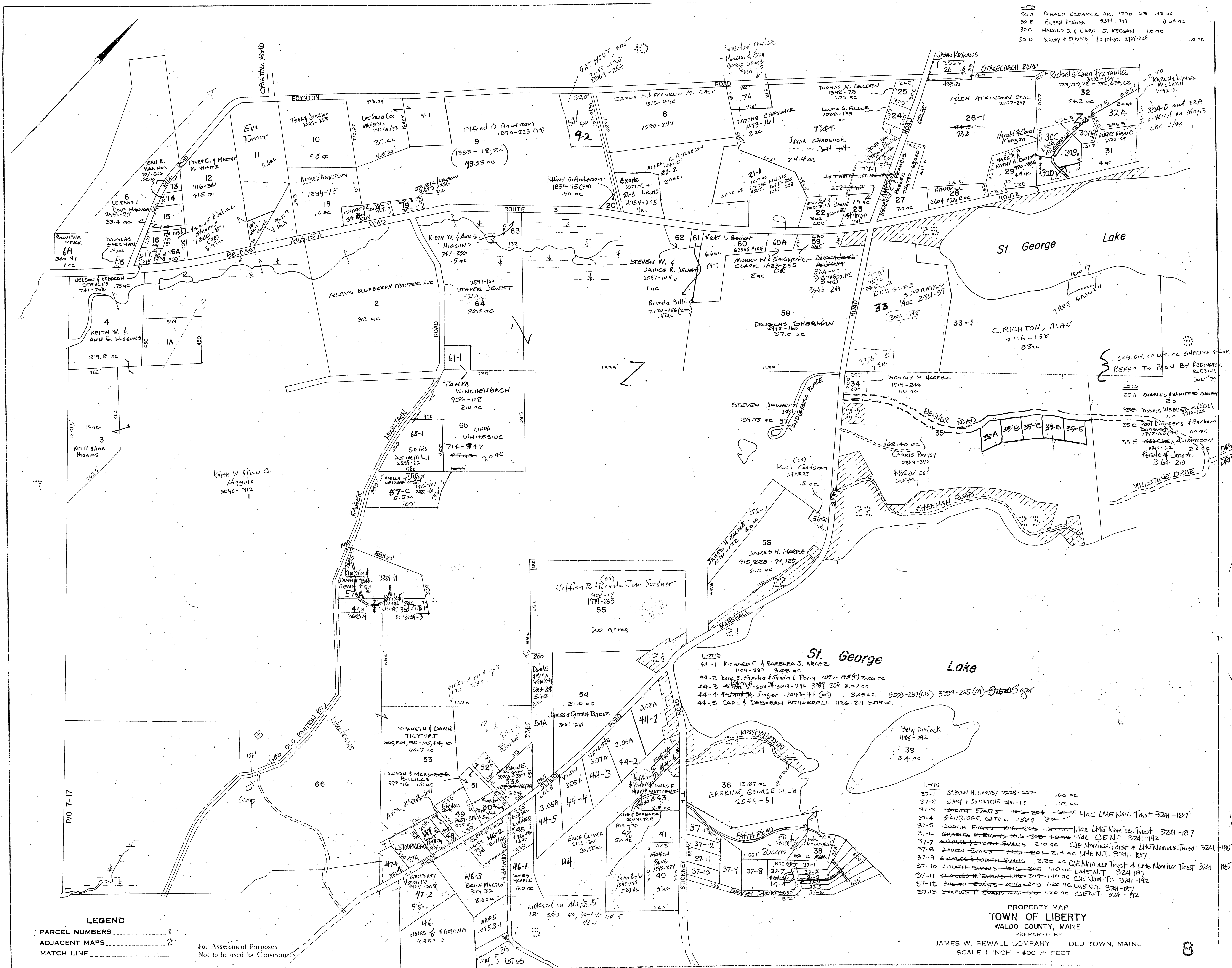


30A RONALD CEBAMER JR. 1290-63 .93 ac
 30B EILEEN KEEGAN 2091-241 0.4 ac
 30C HAROLD J. & CAROL J. KEEGAN 1.0 ac
 30D RALPH & ELAINE JOHNSON 2961-226 1.0 ac



LEGEND
 PARCEL NUMBERS 1
 ADJACENT MAPS 2
 MATCH LINE 3

For Assessment Purposes
 Not to be used for Conveyances

St. George Lake
 44-1 RICHARD C. & BARBARA J. ARASZ 1109-239 3.08 ac
 44-2 BANG S. SANDER & SANDA L. PERRY 1897-195 (6) 3.06 ac
 44-3 S. SANDER & BANG S. SANDER 2043-246 3.89 254 3.07 ac
 44-4 RICHARD C. ARASZ 2043-44 (6) 3.05 ac 3238-237 (6) 3.79-255 (1) 3.79 ac
 44-5 CARL & DEBORAH BEHERRELL 1186-211 3.05 ac

LOTS
 37-1 STEVEN H. HARVEY 2028-222 .60 ac
 37-2 GARY I. JOHNSTONE 2191-118 .52 ac
 37-3 EDITH EVANS 1946-204 6.0 ac LME Nom. Trust 3241-187
 37-4 ELDRIEGE, BETH L. 2529 87
 37-5 JUDITH EVANS 1046-208 1.1 ac LME Nominee Trust 3241-187
 37-6 CHARLES H. EVANS 1046-208 1.1 ac LME N.T. 3241-192
 37-7 CHARLES H. EVANS 1046-208 2.10 ac CJE Nominee Trust & LME Nominee Trust 3241-185
 37-8 JUDITH EVANS 1046-204 2.4 ac LME N.T. 3241-187
 37-9 CHARLES H. EVANS 1046-208 2.30 ac CJE Nominee Trust & LME Nominee Trust 3241-185
 37-10 JUDITH EVANS 1046-208 1.10 ac LME N.T. 3241-187
 37-11 CHARLES H. EVANS 1046-208 1.10 ac CJE N.T. 3241-192
 37-12 JUDITH EVANS 1046-208 1.20 ac LME N.T. 3241-187
 37-13 CHARLES H. EVANS 1046-208 1.20 ac CJE N.T. 3241-192

PROPERTY MAP
TOWN OF LIBERTY
 WALDO COUNTY, MAINE
 PREPARED BY
 JAMES W. SEWALL COMPANY OLD TOWN, MAINE
 SCALE 1 INCH = 400 FEET